



RDS Encoder

seriesOne RDS

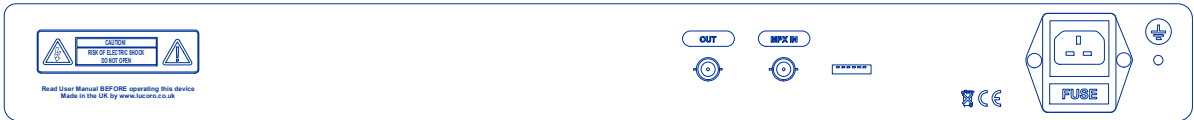
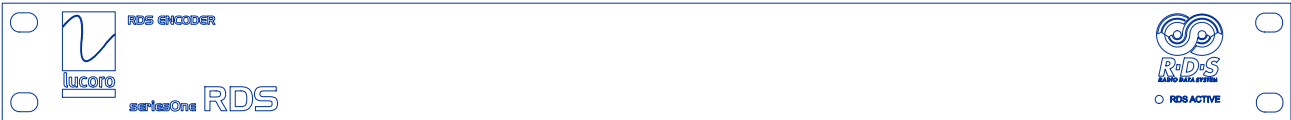
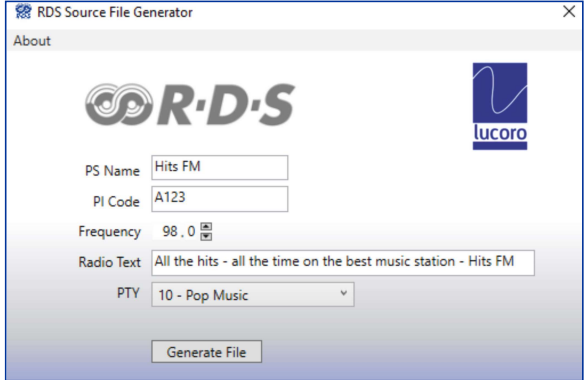


- ### Features
- Pure digital synthesis
 - No computer or data feed required
 - 16x oversampled subcarrier
 - Includes RDS RadioTEXT and Traffic data
 - Windows(TM) RDS App

- ### Applications
- RDS and RBDS for FM radio stations
 - MPX linked broadcast sites
 - Campus radio services
 - Independent radio services
 - Community radio services

The seriesOne RDS Encoder is for cost conscious radio stations that desire RDS without extra dynamic features. The digital sub-carrier is 16x oversampled, ensuring spectral purity.

Ideal for broadcast sites fed by analogue (multiplex baseband) STL feeds, the seriesOne RDS Encoder includes RadioTEXT and traffic data. The non-volatile memory can be updated, when required, via a programming port - using a Windows(TM) laptop and programmer.



Specifications

Dimensions:	1U 44 H x 482 W x 118 D (mm)	Temperature	-20° to +42°C
Weight:	1.1kg	Voltage:	100 - 250Vac 50-60Hz
MPX input:	BNC female 75ohm (nominal +8dBu)		
MPX output:	BNC female 75ohm (nominal +8dBu)		
RDS encoder:	Direct digital synthesis		
RDS groups:	0A, 2A (others to order)		
RDS level:	+/- 2.0KHz (internally adjustable)		

Lucoro Broadcast

www.broadcast.lucoro.co.uk broadcast@lucoro.co.uk

Lucoro Ltd, Clay Pit lane, Bar lane Industrial Estate, Rocliffe, York, YO51 9FS United Kingdom

We reserve the right to alter specifications without notice. E&OE. Photographs and illustrations are for guidance only and do not form a contract.